

Technical Specifications

GHD & Scout™
Handheld Traffic Radars
Revision Date 3-29-12



SONCELL NORTH AMERICA
A PUBLIC SAFETY COMPANY



www.DecaturElectronics.com
Phone: 800.428.4315
Outside USA: 217.428.4315

Decatur Electronics
3433 East Wood Street
Phoenix, AZ 85040

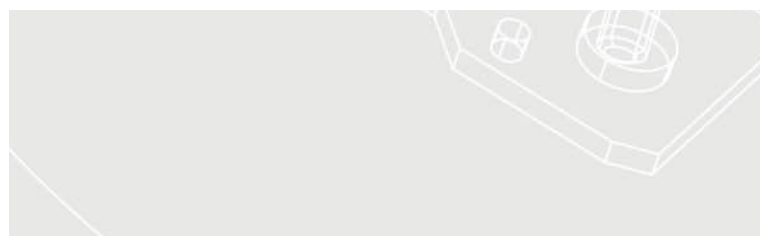
General - GHD & Scout	
Type	Stationary hand held directional Doppler radar
Accuracy	± 1 unit of measure (± 1 mph, ± 1 km/h)
Ambient Operating Temperature	-22°F to +158°F (-30°C to +70°C)
Audio	Eight (8) audio levels
Communications	RS232
Controls	Rubber keypad with Menu, Test, Power, Fast and Select buttons. Trigger switch
Display	LCD with backlight
Display LCD	Displays target and locked target speeds along with all menu options and message icons
Features	DSP, 32 bit processing. User selectable direction modes (towards, away, or both directions), faster target selection
Frame	Housing is a rugged ABS Polycarbonate Blend
Maximum Humidity	90% relative humidity @ +98.6°F (+37°C)
Power - GHD	+12VDC nominal via power cable with lighter plug.
Power - Scout	Scout - Six (6) AA NiMH batteries or detachable +12 VDC power cable with lighter plug
Speed Measurements	mph or km/h
Speed Range	12 - 210 mph (20 - 337 km/h)
Standard Warranty	2 years parts & labor
Water Resistance	Meets International Robustness Standard IEC 529:1989 and European Community Standard EN60529 Classification IP55

Mechanical - GHD	
Dimensions	8" (H) x 3" (W) x 7.25" (L) (20.32 cm x 7.62 cm x 18.415 cm)
Weight	1.8 lbs (0.816 kg) with batteries

Mechanical - Scout	
Dimensions	10.25" (H) x 3" (W) x 7.25" (L) (26.305 cm x 7.62 cm x 18.415 cm)
Weight	2.1 lbs (0.952 kg) with batteries

Electrical - GHD Power	
Power Requirements	+8.5 VDC to +16.5 VDC
Low Voltage Shutdown	8.5 VDC

Electrical - Scout Power	
Battery Requirements	Six (6) AA Nickel-Metal-Hydride (NiMH) rechargeable batteries (User replaceable)
Battery Voltage Range	+6.1 VDC to +7.2 VDC
Battery Low Voltage Shutdown	+6.1 VDC
Detachable Power Cord	Plugs into the cigar lighter receptacle of the vehicle
Power Cord Voltage Range	+8.5 VDC to +16.5 VDC
Power Cord Low Voltage Shutdown	+ 8.5 VDC





Technical Specifications

GHD & Scout™
Handheld Traffic Radars
Revision Date 3-29-12



SONCELL NORTH AMERICA
A PUBLIC SAFETY COMPANY

Electrical - Power Consumption Parameters - GHD & Scout (All currents measured at 7.2 VDC with backlight on and volume level set at 3)

Standby (antenna off)	0.105 ampres
Antenna ON (no targets)	0.170 ampres
Antenna ON (with targets)	0.172 ampres
Antenna OFF (segment check "888")	0.116 ampres
Antenna ON (segment check "888")	0.180 ampres

Microwave - GHD & Scout

IACP Type	III
FCC Identifier	HTRCR-1KD
Frequency	24.150 GHz nominal (K-band)
Beam Width	12° nominal
Polarization	Linear
Power Density	$\leq 1 \text{ mW/cm}^2$
Power Output	7 mW nominal

